

GREEN WASTE COLLECTION

ABOUT

The City collects green waste (e.g., yard trimmings, leaves, plant clippings) from residences twice a month. Green waste includes residential yard clippings from routine pruning and landscaping activities. It does not include mechanically produced landscaping debris from commercial tree-cutting services or landscaping companies.

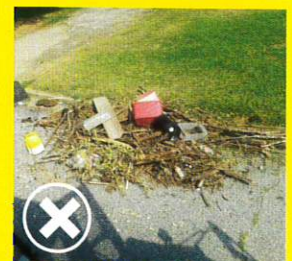
HOW TO PREPARE MATERIAL FOR PICK UP

- Separate green waste into three piles: **BRUSH**, **LEAVES** and **GRASS CLIPPINGS**.
- Place the piles at least 3 feet from obstacles (e.g., mail boxes, utility poles, vehicles).
- **DO NOT** put debris in bicycle lanes.
- **DO NOT** place grass clippings in plastic garbage bags or mix with leaves or brush.
- Tree limbs longer than 6 feet or wider than 6 inches in diameter **WILL NOT BE COLLECTED**.
- Tree stumps/root balls and dirt **WILL NOT BE COLLECTED**.
- Yard waste generated by tree and/or landscape companies **WILL NOT BE COLLECTED**.

THE DO's & DON'Ts



DO NOT BAG GREEN WASTE



DO NOT MIX GARBAGE WITH GREEN WASTE

The City of Spartanburg encourages all resident to compost their leaves and grass trimmings. Please visit scdhec.gov/compost to learn more about backyard composting.

 864.596.2468

 801A Union Street, Spartanburg, SC 29302

 cityofspartanburg.org



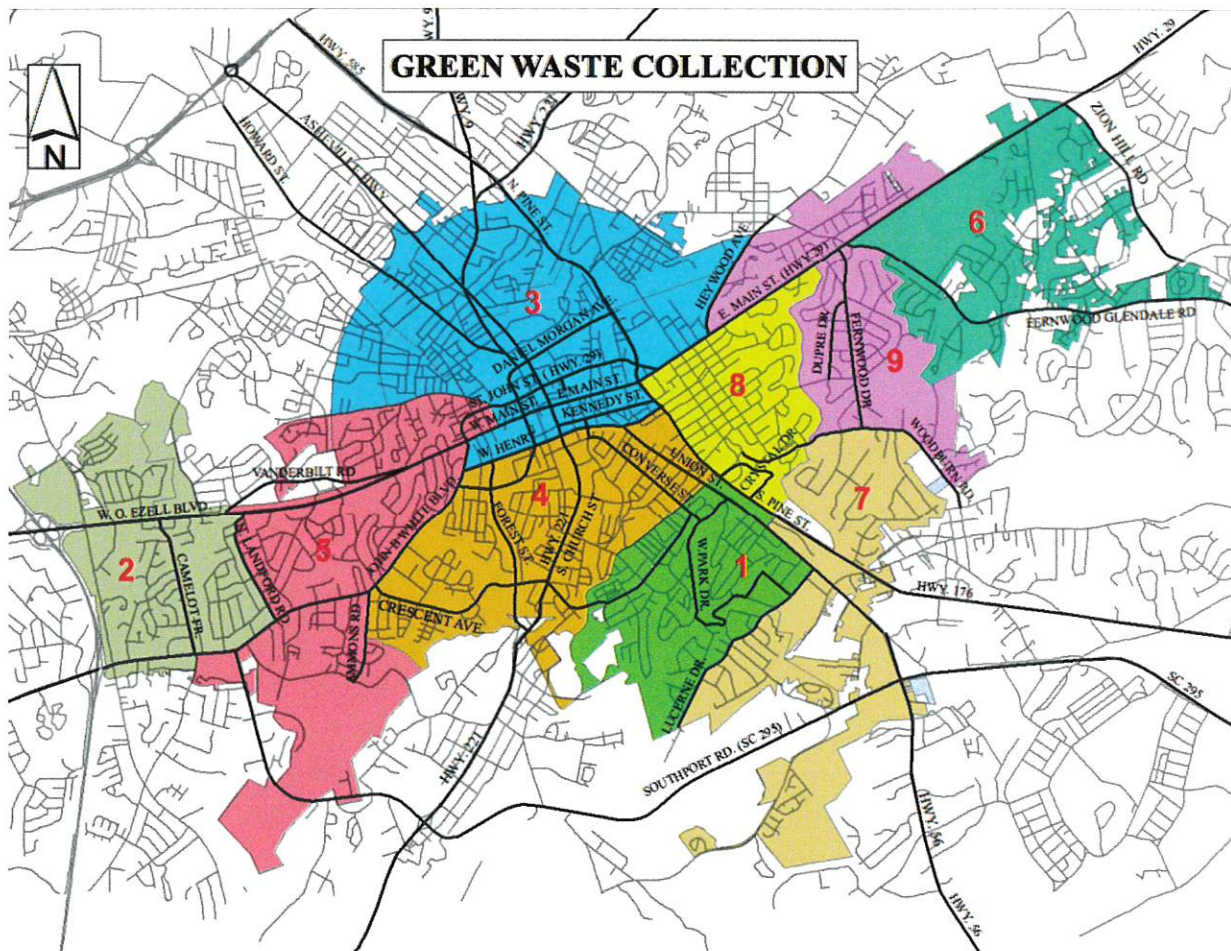
GREEN WASTE COLLECTION

Green waste – unlike garbage and recycling – does not have a set collection schedule and depends on the amount of trimmings to be collected.

Visit cityofspartanburg.org/public-services/solid-waste/greenwaste to see the weekly schedule of work crews collecting green waste and the neighborhoods where they are working.



COLLECTION MAP



864.596.2468

801A Union Street, Spartanburg, SC 29302

cityofspartanburg.org