



# GARBAGE COLLECTION

## ABOUT

The City collects household garbage from single-family residences and apartment buildings (five units or less). Household garbage must be bagged and placed in your gray roll cart for collection.

**Carts must be placed curbside by 7:30 AM** on your scheduled collection day with cart handles facing your home and lid closed. After pickup, carts must be removed from the curb by sunrise the following day per City Code.

The City may offer garbage collection for small businesses when a private hauler is not available. **Fees and charges apply for this service.** Call the City at 864-596-3690 for more information.

## CURBSIDE DON'Ts

THE FOLLOWING SITUATIONS AND OBSTACLES MAY DELAY OR PREVENT THE CITY FROM COLLECTING YOUR GARBAGE.



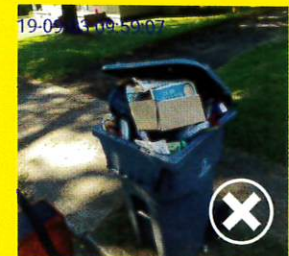
**BLOCKED CART**



**NON-APPROVED ITEM**



**HAZARDOUS ITEM**



**OVERLOADED CART**

- **Blocked Cart** – Make sure that carts are 3 feet away from cars, mail boxes and other objects.
- **Hazardous and Non-Approved Items** – Paint and other liquids, televisions, electronics, tires and yard trimmings should not be placed in City roll carts. **These items WILL NOT be collected.**
- **Overloaded Cart** – Lids must be closed to safely service carts. If needed, additional carts are available for a fee.

📞 864.596.3690

📍 801A Union Street, Spartanburg, SC 29302

🌐 cityofspartanburg.org



## ADDITIONAL CART INFORMATION

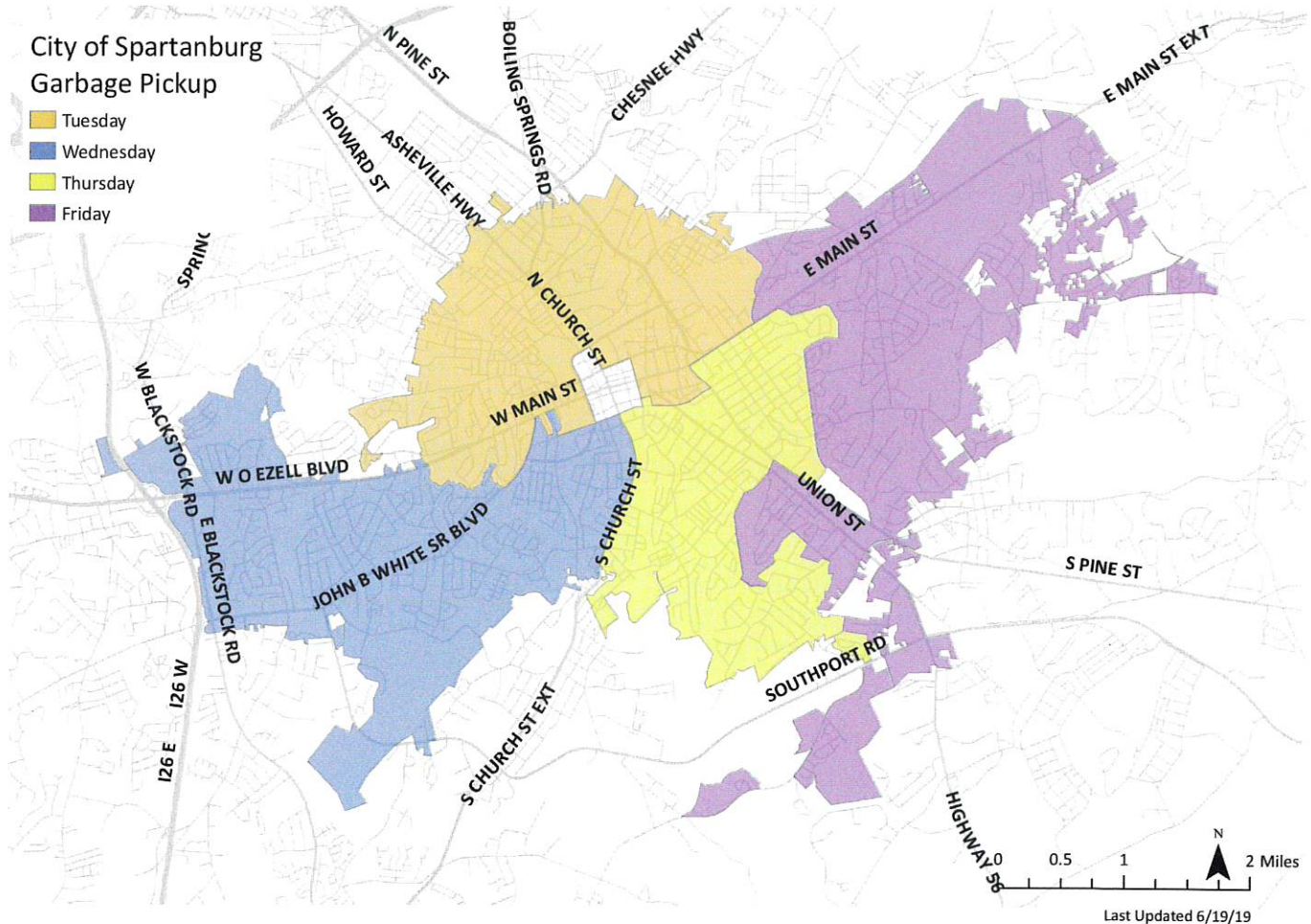
If you need an additional garbage cart, you can request one for a fee. Complete and submit the online request form at [cityofspartanburg.org/public-services/solid-waste](http://cityofspartanburg.org/public-services/solid-waste).

Extra household garbage can be taken to any of Spartanburg County's 16 Recycling Collection Centers at no cost to City residents. To find a center near you, visit [spartanburgcounty.org/493/Landfill-and-Recycling-Center-Hours](http://spartanburgcounty.org/493/Landfill-and-Recycling-Center-Hours).



EXTRA GARBAGE

## COLLECTION MAP



## BULK ITEMS

Occasionally, you may have a large item (e.g., a broken chair, furniture, appliances) that does not fit into your roll cart. Large items can be placed beside your roll cart (3 feet away) on your scheduled collection day.

Garbage collection personnel will notify the City that a large item needs to be picked up from your address. The large item will be removed usually within one or two business days.



864.596.3690

801A Union Street, Spartanburg, SC 29302

[cityofspartanburg.org](http://cityofspartanburg.org)